

Symmetry

for grades 7-10



Henri Picciotto

henri@MathEducationPage.org

www.MathEducationPage.org

blog.MathEducationPage.org



OLIVIA
OLIVIA
OLIVIA

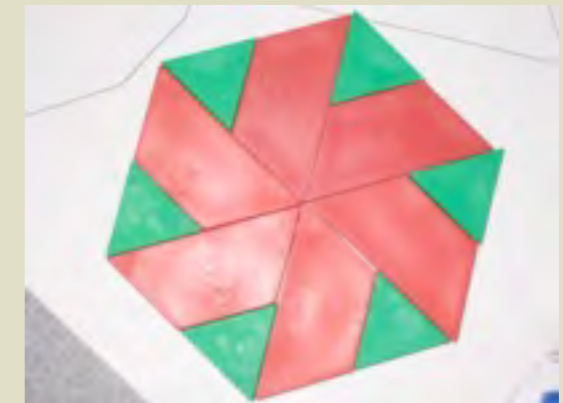
MIKE
MIKE
MIKE

SIS

Emily



Geometry Labs
Henri Picciotto
Key Curriculum Press





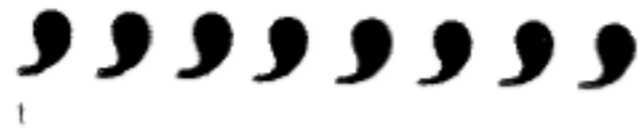




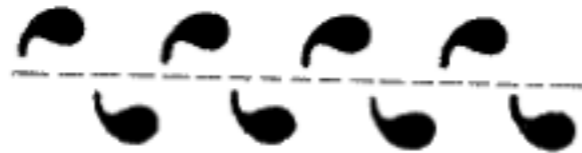


Handbook of Regular Patterns by Peter Stevens

The Seven Line Symmetry Groups



t



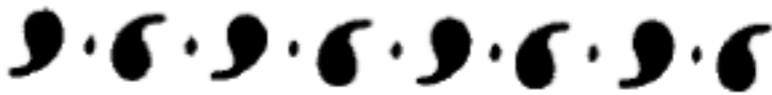
tg



tm



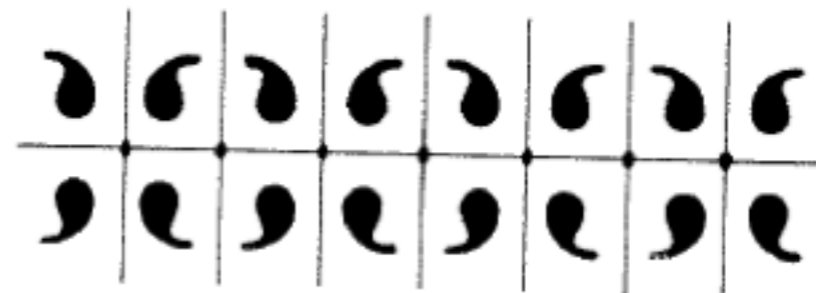
mt



t2



t2mg



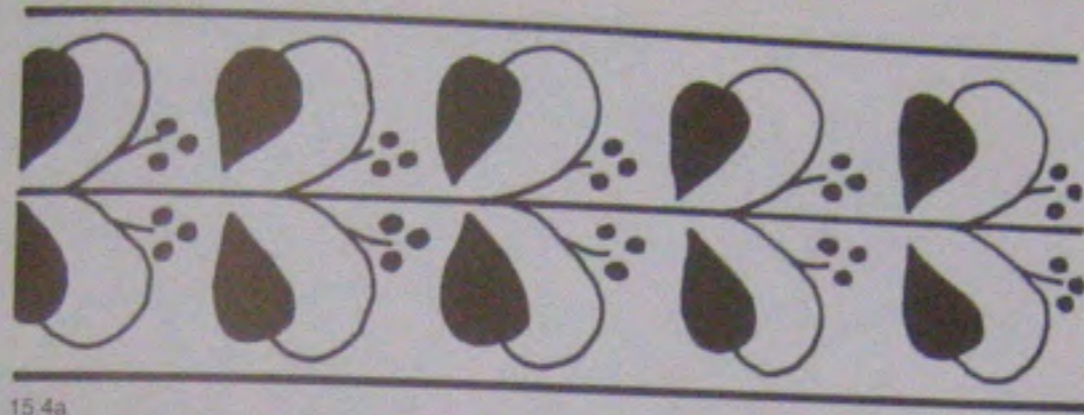
t2mm



13.5e



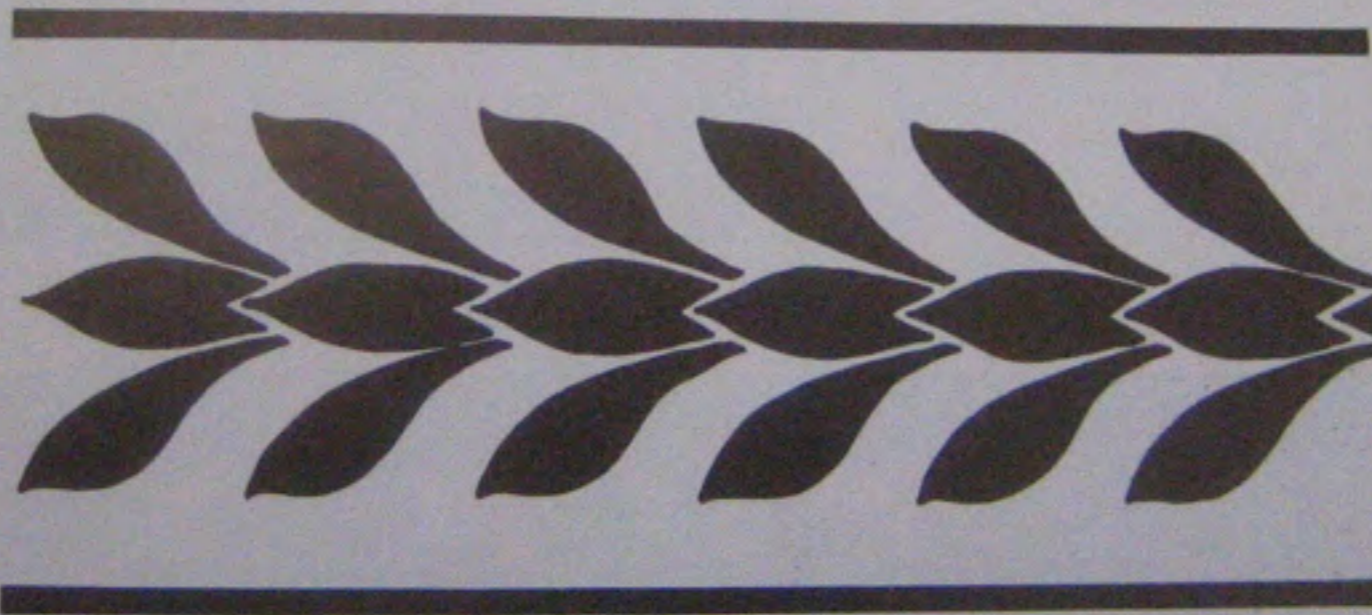
13.5f



15.4a



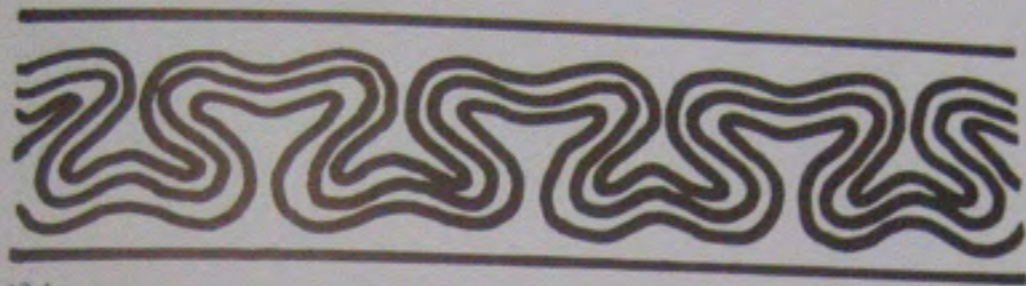
15.4b



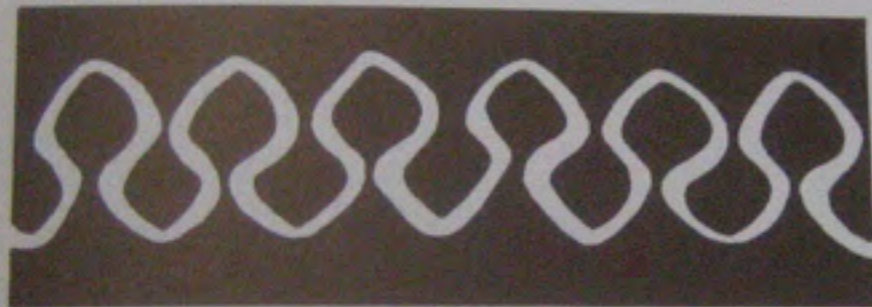
15.4c



15.4d



17.4a



17.4b



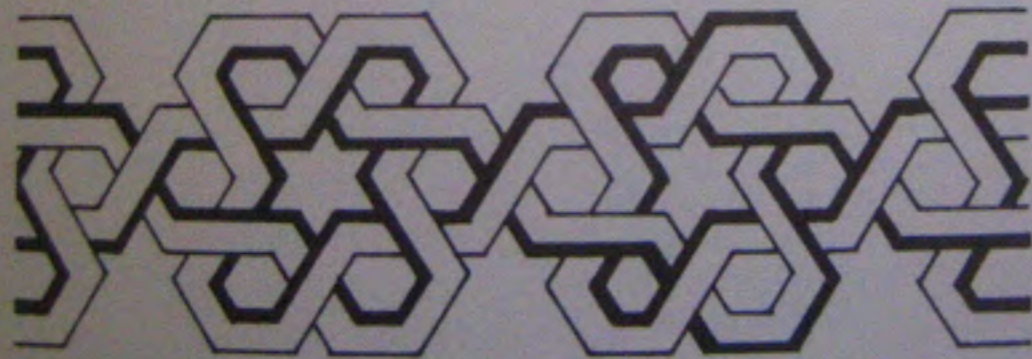
17.4c



16.11



16.12a



16.12b

ugh 18.10 show
ments of four-,
nfold
is we know,
and must rotate
ighest-order
ures are
e examples be-
m.

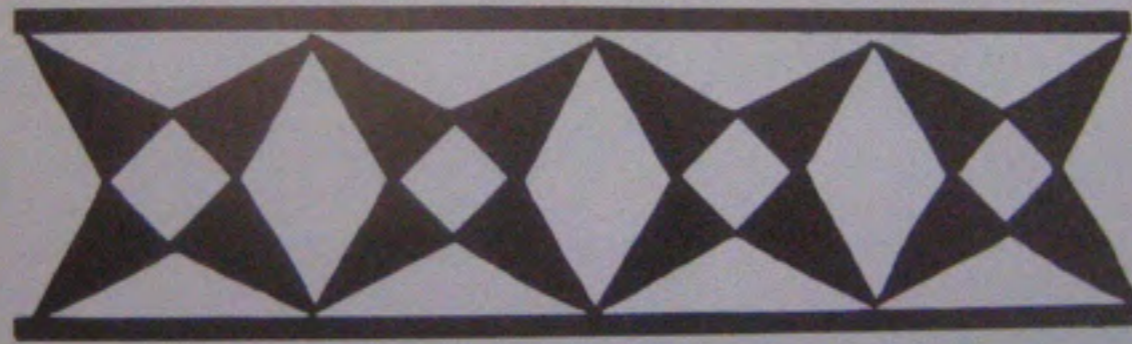
Figure 18.7
(a) Victorian ornament
(b) Arabian
(c) Pompeian mosaic
(d) Byzantine mosaic



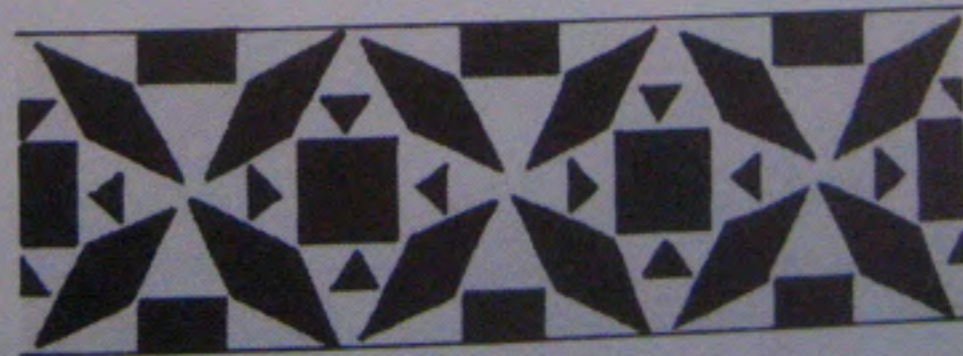
18.7a



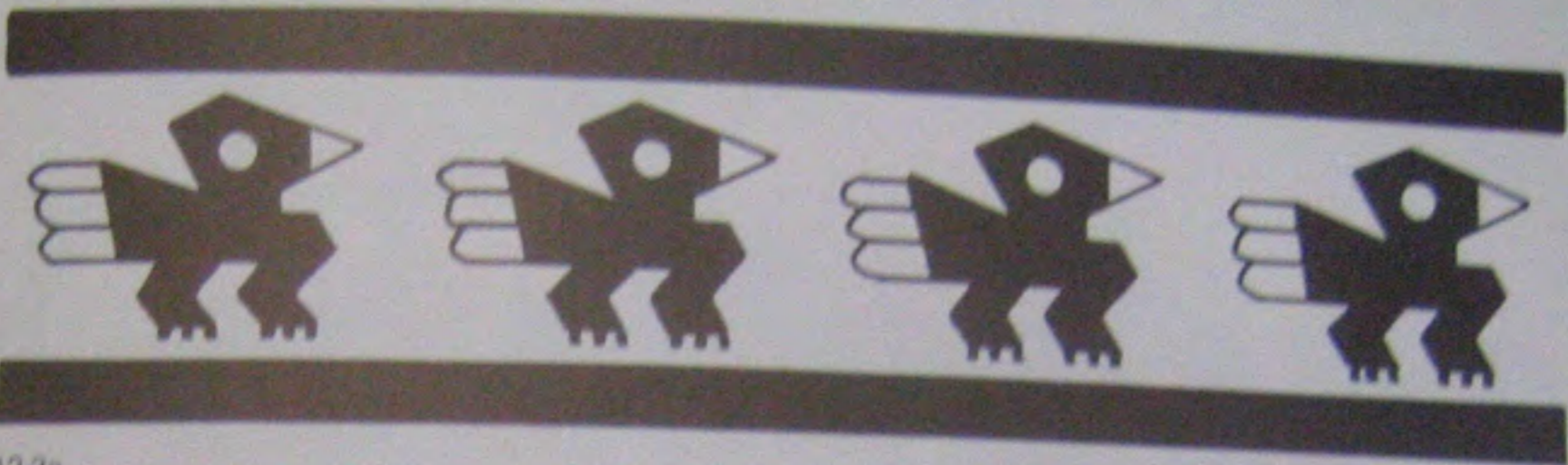
18.7b



18.7c



18.7d



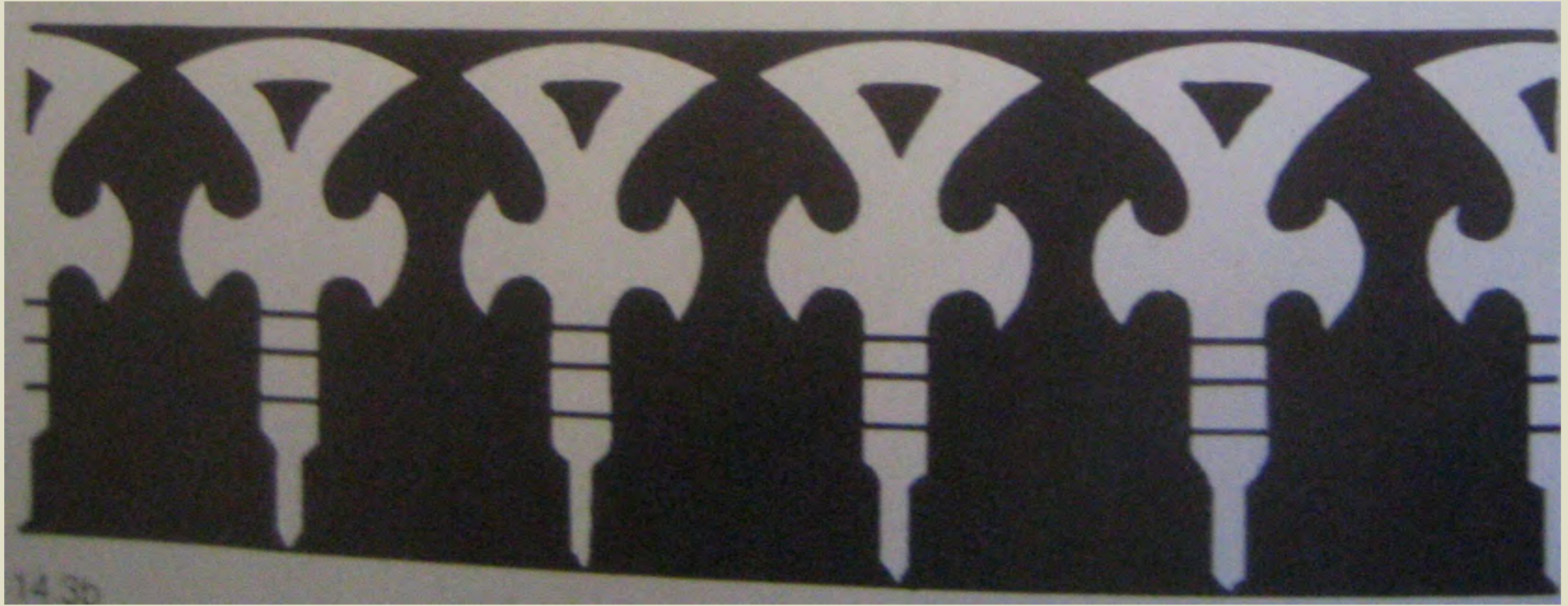
12.3a



12.3b



12.3c



1430



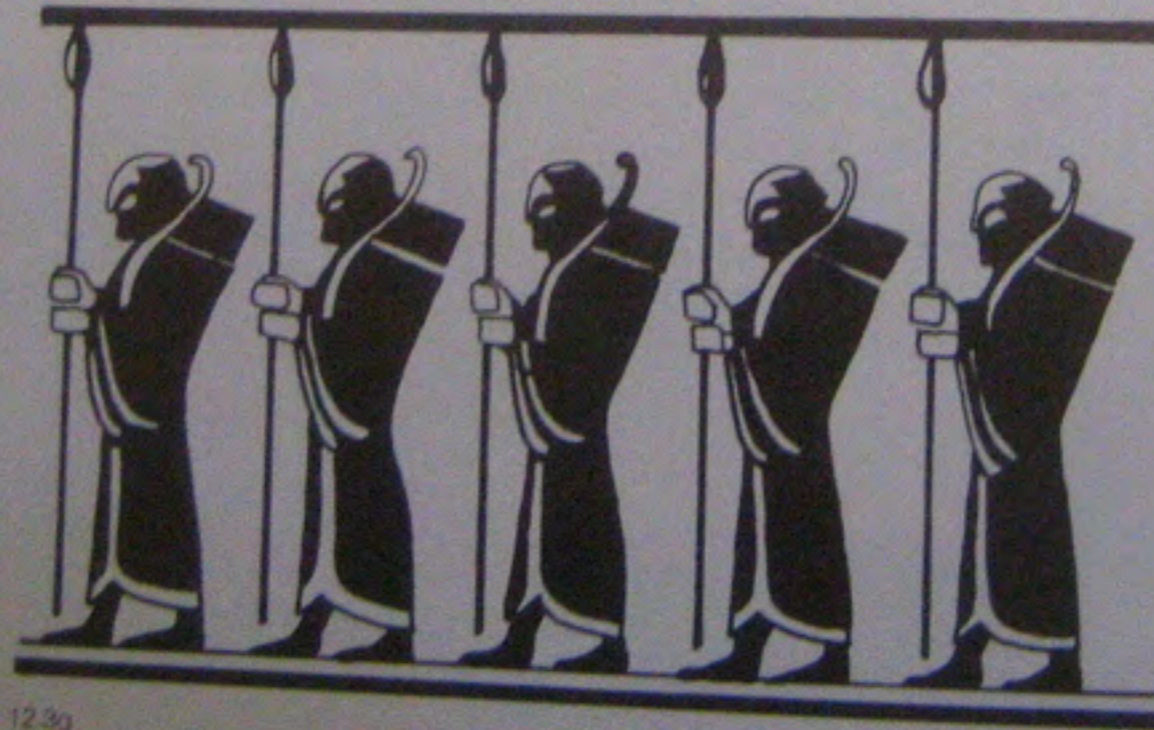
12.3d



12.3e



12.3f



12.3g



16.3a



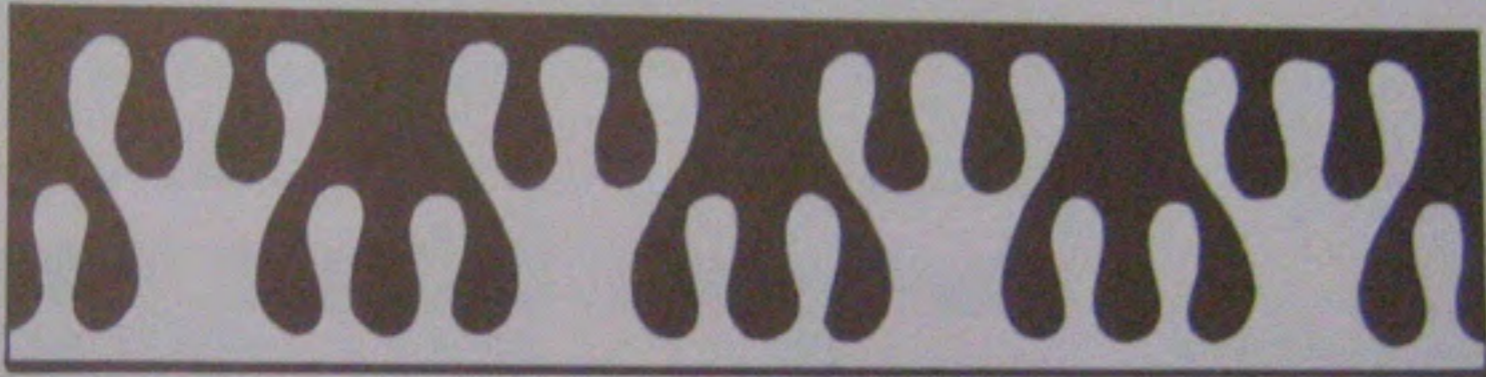
16.3b



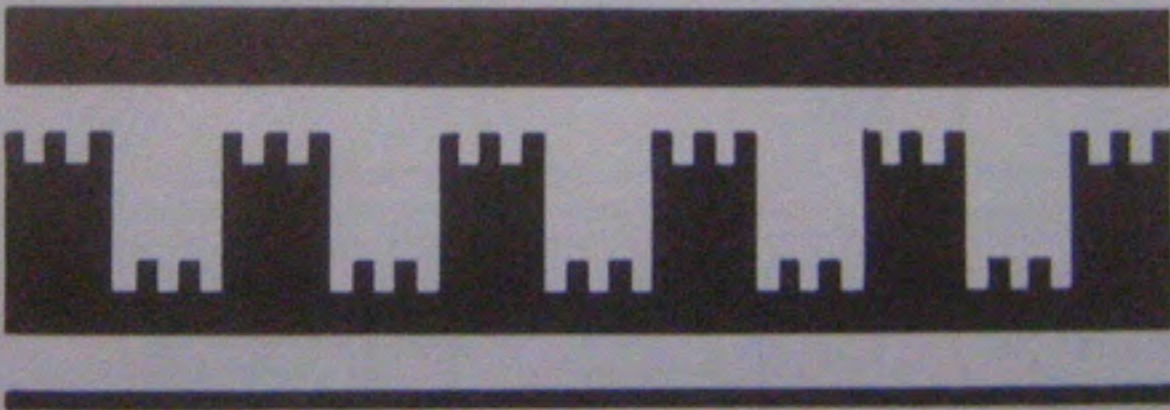
16.3c



17.8a



17.8b



17.8c

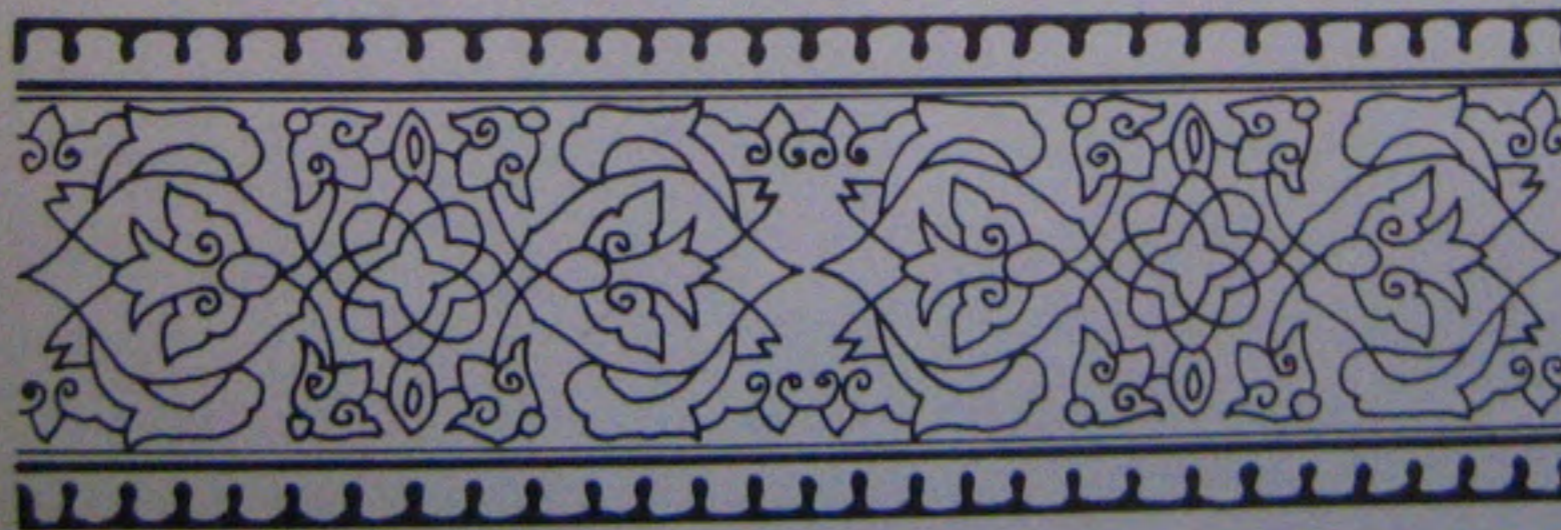




18.3a



18.3b





14.4a

Figure 14.4
(a) Mesopotamian motif, first
millenium B.C.
(b) ancient Egyptian
(c) ancient Greek
(d) ancient Greek



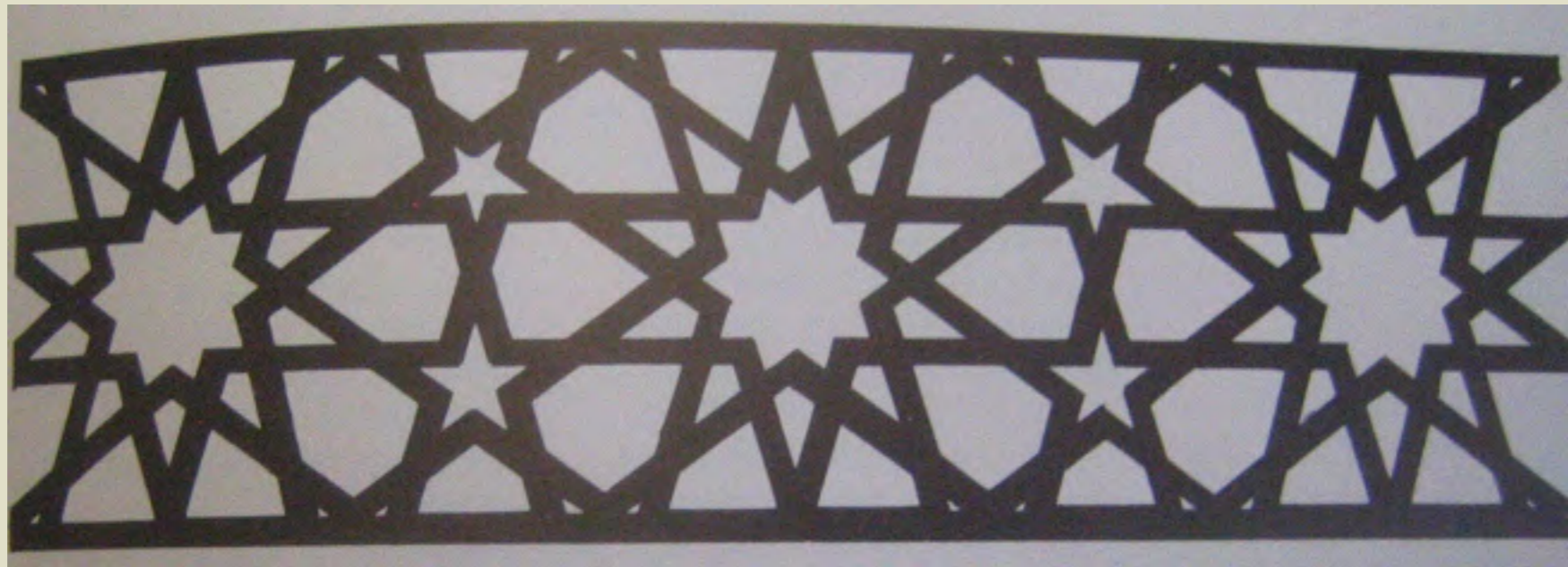
14.4b

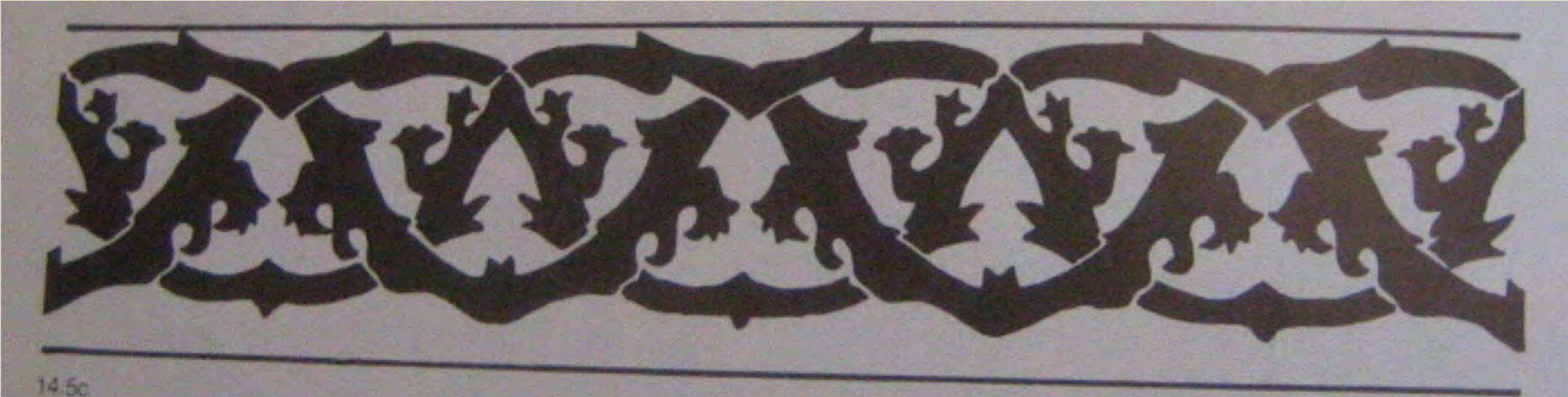


14.4c



14.4d





14.5c



14.5d



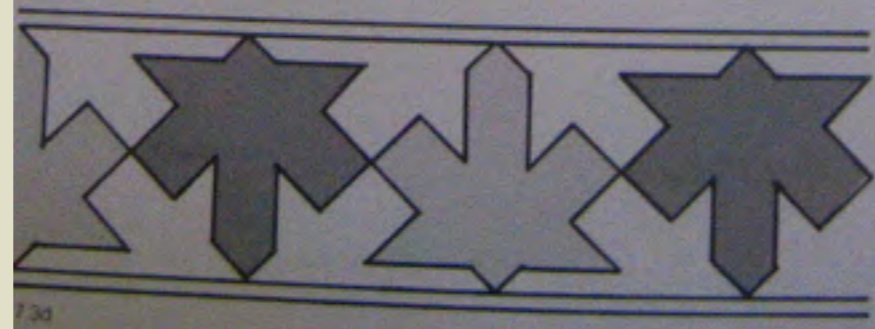
17.3a



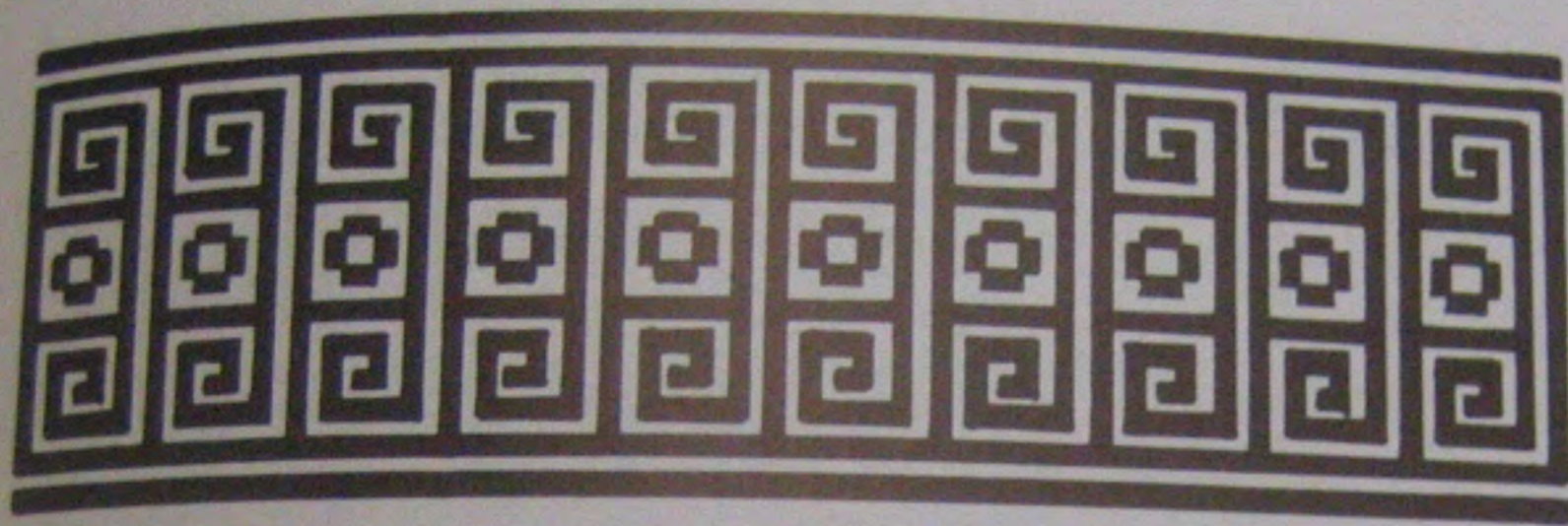
17.3b



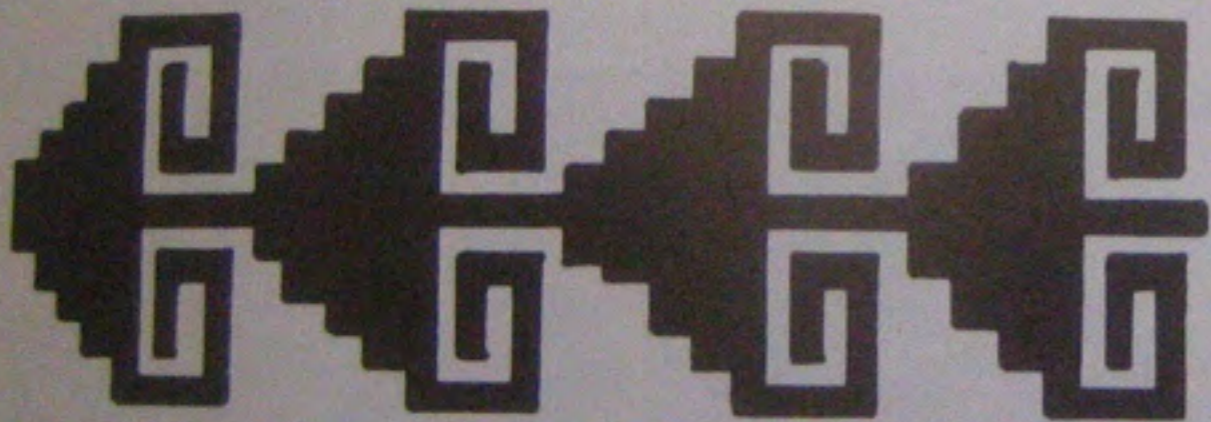
17.3c



17.3d



15.5d



15.5e



15.5f



12.6a

Figure 12.6
(a) French, twentieth century
(b) ancient Greek
(c) Roman, Pompeii
(d) Chinese, eleventh century B.C.



12.6b



12.6c



12.6d

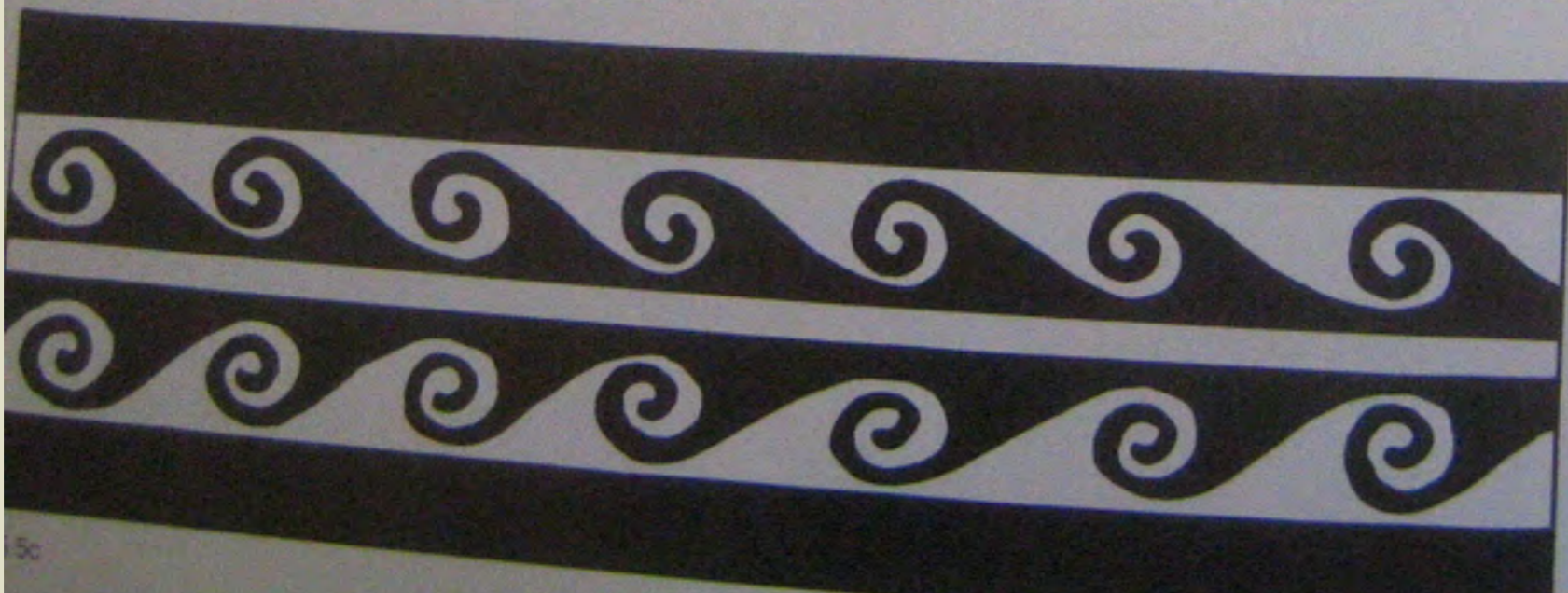


15.5a

Figure 15.5
(a) ancient Greek
(b) Roman, fifth century
(c) Roman
(d) Greek vase design
(e) Mexican
(f) Greek vase design



15.5b



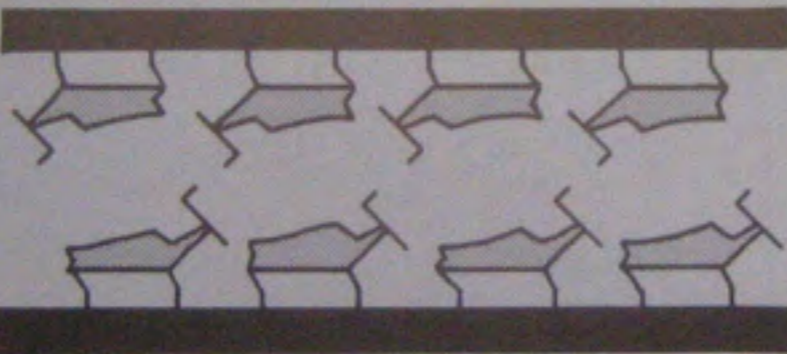
15.5c



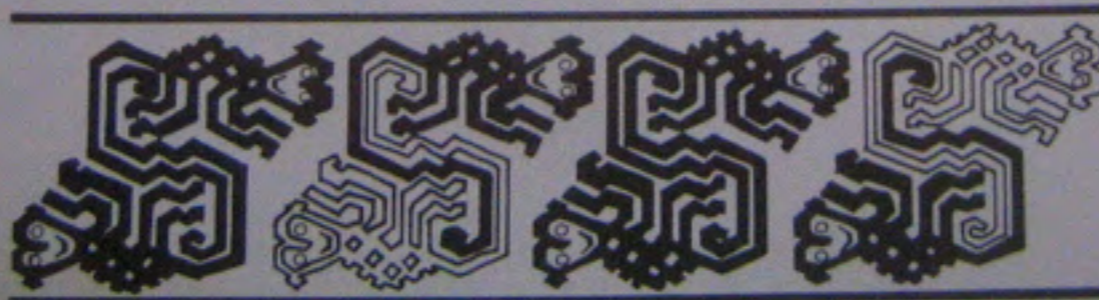
16.2a



16.2b



16.2c



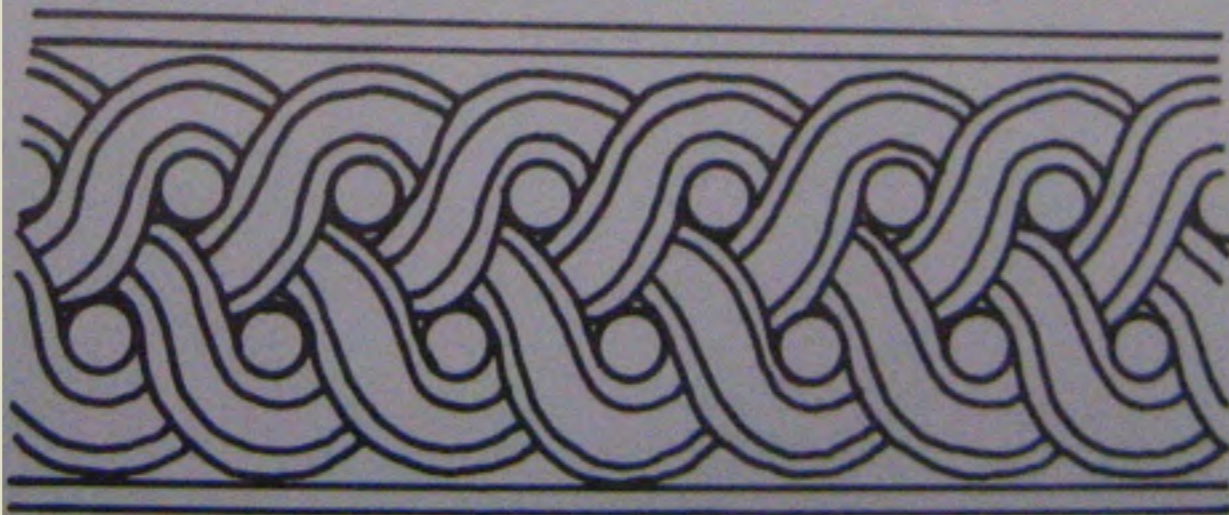
16.2d



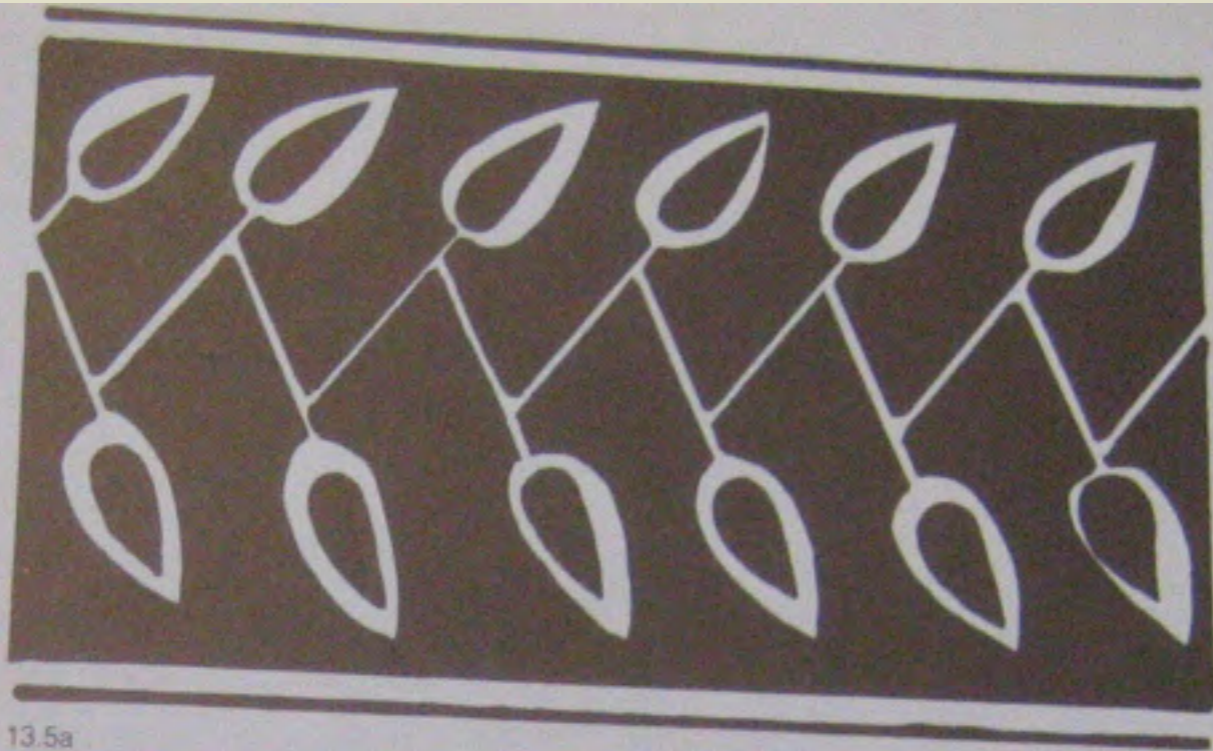
13.3a



13.3b



13.3c



13.5a



13.5b



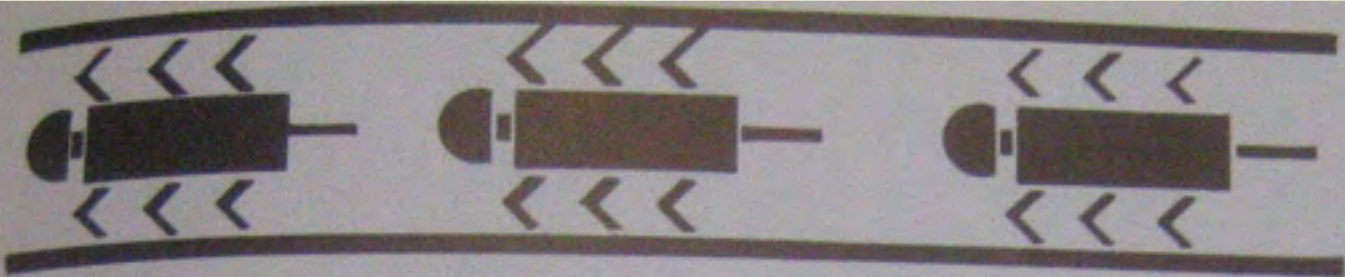
14.2a



14.2b

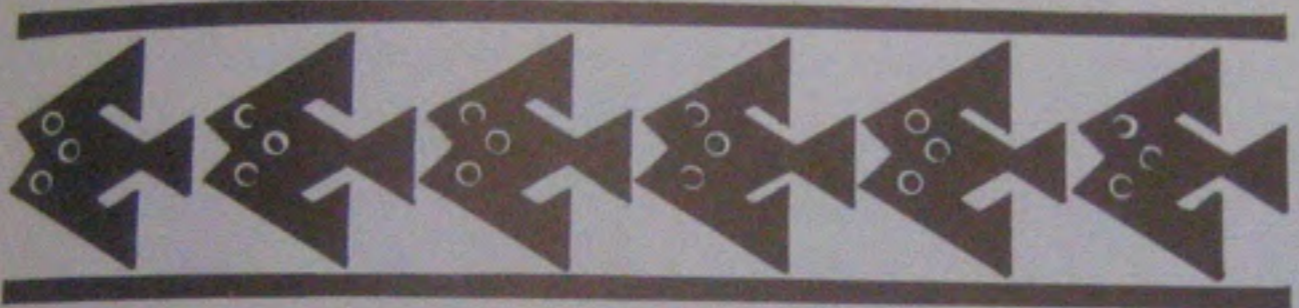


14.2c



127
Group mt

15.2a



15.2b



15.2c



15.2d





p1



p2



p6



pgg



pg



p3



p4



pmg



p4g



pm



pmm



cm



cmm



p31m



p3m1



p4m



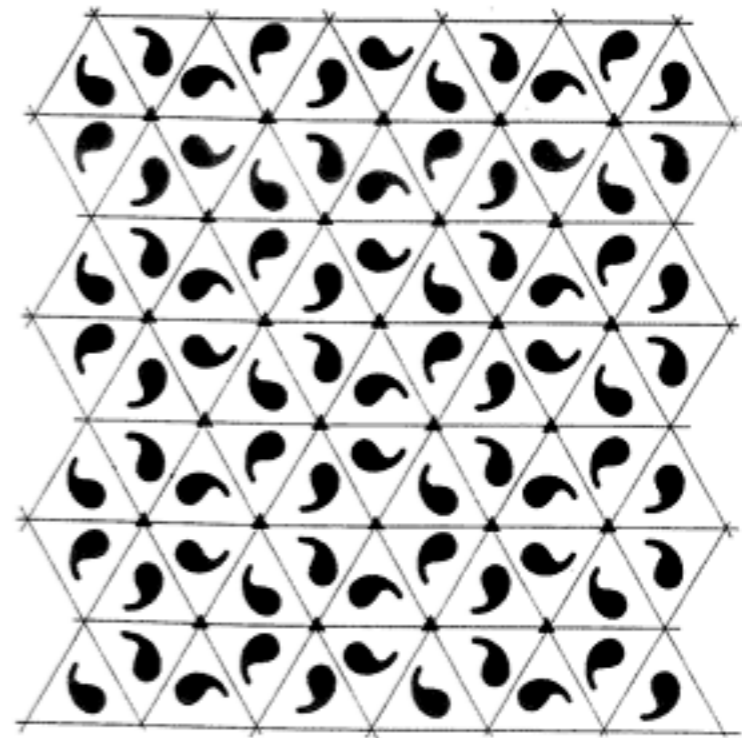
p6m



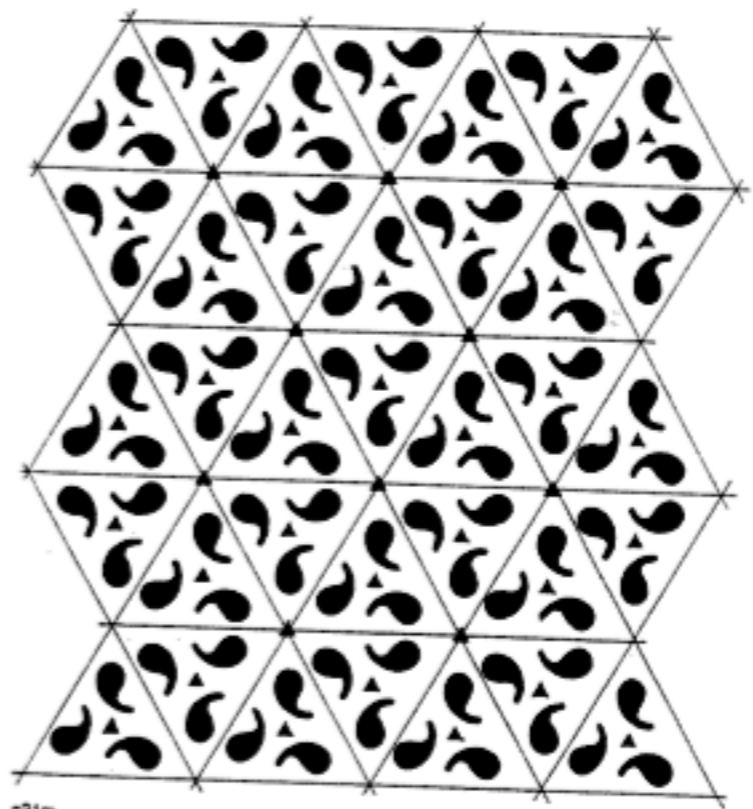
17 WALLPAPER GROUPS



2



$p3m1$



$p31m$

